


| | | | |
|---|---|------------------|-----------------------------------|
|  | <p>MTW HSEQ MS</p> <p>Plan</p> <p>HVO-12-PLAN-SITE-007</p> | Document Owner: | Senior Advisor Emergency Services |
| | | Revision Period: | 2 yearly |
| | | Approved By: | Manager H&S |
| | | Last Revised on: | 20.10.2017 |
| | | Document Author: | Emergency Services Officer |
| <p>Element 12: Business Resilience and Recovery</p> | | | |

Hunter Valley Operations Bushfire Management Plan

Prepared by:
Senior Emergency Services Officer
Pursuant to section 63 of the *Rural Fires Act 1997*

| Plan Bushfire Management | |
|--|-----------------------------------|
| Owner: Senior Advisor Emergency Services | Document ID: HVO-12-PLAN-SITE-007 |

TABLE OF CONTENTS

| | | |
|-------|--|----|
| 1 | INTRODUCTION | 3 |
| 1.1 | BACKGROUND | 3 |
| 1.2 | MANAGEMENT PLAN REQUIREMENTS | 3 |
| 1.3 | MANAGEMENT PLAN OBJECTIVES..... | 3 |
| 1.4 | MANAGEMENT PLAN STRUCTURE | 4 |
| 2 | BUSHFIRE HAZARD..... | 4 |
| 2.1 | BUSHFIRE HISTORY | 4 |
| 2.2 | BUSHFIRE SEASON | 4 |
| 2.3 | BUSHFIRE RISK (IGNITION SOURCES) | 4 |
| 2.4 | MINE SITE ASSETS..... | 4 |
| 3 | BUSHFIRE MANAGEMENT MEASURES | 5 |
| 3.1 | BUSHFIRE HAZARD MANAGEMENT..... | 5 |
| 3.1.1 | FIRE AWARENESS AND TRAINING | 5 |
| 3.1.2 | EQUIPMENT | 5 |
| 3.1.3 | MINE SITE ASSETS..... | 6 |
| 3.1.4 | ACCESS TO SITE (APPENDIX A)..... | 6 |
| 3.1.5 | SITE SECURITY..... | 7 |
| 3.1.6 | FUEL REDUCTION BURNING (PRESCRIBED BURNING) | 7 |
| 3.1.7 | FIRE BREAKS AND TRAILS | 7 |
| 3.1.8 | BUSHFIRE MANAGEMENT UNITS | 7 |
| 3.2 | BUSHFIRE RISK MANAGEMENT..... | 8 |
| 3.2.1 | FIRE SUPPRESSION..... | 8 |
| 3.2.2 | FIRE DETECTION AND EMERGENCY RESPONSE..... | 8 |
| 3.2.3 | COMMUNICATION..... | 9 |
| 3.2.4 | FIRE FIGHTING RESOURCES AND EQUIPMENT..... | 9 |
| 4 | REPORTING | 9 |
| 5 | DOCUMENT REVIEW | 10 |
| 6 | IMPLEMENTATION PLAN | 11 |
| 7 | REFERENCES..... | 13 |
| 8 | CONTACTS LISTING..... | 14 |
| 9 | APPENDICES | 19 |
| | APPENDIX A – HVO MTW ACCESS..... | 19 |
| | APPENDIX B – HVO INFRASTRUCTURE AND FIRE MANAGEMENT CONTROLS | 20 |
| | APPENDIX C– FIRE SERVICES BLOCK PLANS..... | 21 |
| | REVISION HISTORY | 26 |

LIST OF TABLES

| | |
|--|----|
| TABLE 1 – BUSHFIRE MANAGEMENT UNITS..... | 7 |
| TABLE 2 – FIRE FIGHTING RESOURCES AND EQUIPMENT | 9 |
| TABLE 3 – BMP COMMITMENTS AND RESPONSIBILITIES | 11 |
| TABLE 4 – STAFF TELEPHONE CONTACT DETAILS..... | 14 |
| TABLE 5 – EXTERNAL EMERGENCY SERVICES & UTILITIES/INSTRUMENTALITIES CONTACT DETAILS .. | 15 |
| TABLE 6 – NEIGHBOURS AND TENANT CONTACT DETAILS..... | 16 |

| <p style="text-align: center;">Plan</p> <p style="text-align: center;">Bushfire Management</p> | |
|---|-----------------------------------|
| Owner: Senior Advisor Emergency Services | Document ID: HVO-12-PLAN-SITE-007 |

1 INTRODUCTION

1.1 Background

Hunter Valley Operations (HVO) is an open cut coal mine located in the Hunter Valley. The total landholding for HVO is approximately 14,000 ha, including mine lease areas and surrounding buffer lands, and is comprised of a large amount of bush land. Rio Tinto HSEQ Management System Element 12 Business Resilience and Recovery requires the site to ensure that effective measures are put in place to prepare for, mitigate, control and recover from incidents which have the potential to affect or disrupt the business and/or its operations. Measures related to bushfire management are detailed in this Plan. Section 2 of the HVO Business Resilience and Recovery Plan contains the Emergency Response Plan (ERP), which outlines the response protocols in the event of an outbreak of bushfire.

1.2 Management Plan Requirements

It is a requirement from the NSW Department of Trade & Investment and other legislation that the mine site has an emergency response plan, which is a guideline for the management of emergencies on site including the threat of bushfires.

The following extract, taken from the current HVO North Development Consent (DA 450-10-2003), details the requirement for bushfire management and response:

Schedule 4 BUSHFIRE MANAGEMENT
Condition 60. The Applicant shall:

- ensure that the development is suitably equipped to respond to any fires on-site;
- assist the Rural Fire Service and emergency services as much as possible if there is a fire on-site during the development.
- Condition 61. The Applicant shall ensure that the Bushfire Management Plan for the site is to the satisfaction of Council and the Rural Fire Service.

1.3 Management Plan Objectives

The objectives of the Bushfire Management Plan are to:

- Mitigate risk of bushfire outbreak;
- Mitigate risk to all personnel;
- Protect and minimise damage to assets;
- Manage ignition sources on site;
- Minimise impact to surrounding neighbours;
- Reduce the number of human-induced bush fire ignitions that cause damage to life, property and the environment;
- Manage fuel to reduce the rate of spread and intensity of bushfires, while minimising environmental / ecological impacts;
- Reduce the community's vulnerability to bush fires by improving its preparedness; and
- Effectively contain fires with a potential to cause damage to life, property and the environment.

| Plan Bushfire Management | |
|--|-----------------------------------|
| Owner: Senior Advisor Emergency Services | Document ID: HVO-12-PLAN-SITE-007 |

1.4 Management Plan Structure

The plan is drawn up in conjunction with the "HVO Emergency Response Plan" and the requirements of the "NSW Department of Planning & Environment".

2 BUSHFIRE HAZARD

2.1 Bushfire History

In the past seven (7) years there have been approximately three (3) to four (4) small grass fires within the mine site boundaries. There have been a number of larger bushfires within the surrounding singleton bushfire management committee (BFMC) area that did not spread to HVO owned land; however, these events did have the potential to cause fires on HVO land if they had not been controlled by the surrounding regional emergency services resources. the biggest threat to HVO is both bush and grass fire, with the risk to site dependent on both the location of the initial ignition point and fuel loads at the time of the fire.

2.2 Bushfire Season

The bushfire season for the Hunter Valley District is from the 1st of September – 31st of March inclusive. This is a permanent variation from the statutory requirements of 1 October each year.

2.3 Bushfire Risk (Ignition Sources)

The following is a list of risks that may cause the ignition of a bush/grass fire on the mine site or the surrounding areas that may encroach onto the mine site:

- Lightning
- Arson
- Rail lines and maintenance of same; e.g. rail grinding
- Power lines
- Hot works in bushland area
- Spontaneous combustion
- Illegal burning activities
- Vehicle dumping and ignition of same

Activities with a high potential to cause ignition of bushfires such as welding, oxy cutting, frictional cutting etc. not being undertaken in a designated hot work area are controlled at HVO using a Hot Work Permit system. This permit requires combustible materials to be removed from the work area and requires monitoring of the area after hot work has been completed.

2.4 Mine Site Assets

The following is a list of assets that may be threatened by bushfire:

- Biodiversity Areas (Northern and Wandewoi)
- Boundary fences
- Overland conveyer belts
- Power lines and power poles
- Substations
- Water pipe lines

| Plan Bushfire Management | |
|--|-----------------------------------|
| Owner: Senior Advisor Emergency Services | Document ID: HVO-12-PLAN-SITE-007 |

- Coal Handling Preparation Plants (CHPP's)
- Coal train loading facilities
- Diesel fuel farms
- Explosives Magazines
- Communications tower

3 BUSHFIRE MANAGEMENT MEASURES

3.1 Bushfire Hazard Management

The mine site has in place separate Management Plans for the Southern and Northern Biodiversity Areas these plans detail the use of fire for conservation management. This Plan seeks to exclude bushfire from these areas to protect the ecological values and the areas that have been re-established by tree planting. Monitoring of these areas is undertaken to assess the bushfire risk and safe access, also actions to reduce fire fuel loads through grazing or slashing. Management of fuel load reduction on buffer properties is undertaken by Land and Tenements. A HVO Completed Fire Management Controls Map is attached, dated 10.03.15, as Appendix B.

3.1.1 Fire Awareness and Training

The mine site has an Emergency Response team led by Emergency Services Officers (ESO's) who train once a month in all facets of emergency response to incidents, including bushfires. These officers are rostered on each crew and respond to all emergency incidents as required.

All operators of equipment are trained in the use of portable fire extinguishers and have refresher training every 2 years. Site water carts are equipped with firefighting monitors and hose reels with operators trained in their use and firefighting techniques.

Fire Wardens are trained and are in place in the entire building infrastructure with annually scheduled evacuation drills conducted for each facility within the mine.

To further develop relationships and maintain up to date skills in Wildfire Behaviour and Firefighting strategies, the HVO Emergency Response Team endeavours to participate in mutually beneficial training with the Rural Fire Service on an annual basis.

3.1.2 Equipment

The following is a list of equipment available on site which can be used for combating bushfires:

- 1 x Isuzu FTO 800 2 & 4 wheel drive firefighting appliance with a water capacity of 2000 litres and 80 litres of firefighting foam
- 1 x Isuzu FTS 750 2 & 4 wheel drive firefighting appliance with a water capacity of 3300 litres and 80 litres of firefighting foam
- 7 x Caterpillar water carts with each having a water capacity ranging from 77,000 to 115,000 litres, 500 to 600 litres of firefighting foam and firefighting monitors
- 30 x Caterpillar D10 / D11 dozers, which can be utilised for the preparation of fire breaks
- 11 x Caterpillar graders, which can be utilised for the preparation of fire breaks
- Portable Fire Extinguishers, Fire Depots and Fire Suppression throughout the mine infrastructure
- Portable Fire Extinguishers and Fire Suppression on mobile plant

| <p style="text-align: center;">Plan</p> <p style="text-align: center;">Bushfire Management</p> | |
|---|-----------------------------------|
| Owner: Senior Advisor Emergency Services | Document ID: HVO-12-PLAN-SITE-007 |

3.1.3 Mine Site Assets

All large operational equipment is installed with fire suppressions systems. All building infrastructure are protected with ring mains and pillar hydrants connected to both electric and backup diesel fire pumps. Fire detection systems are installed as per Australian Standards and locations identified via a Risk Assessed approach.

3.1.4 Access to Site (Appendix A)

Main access points to the mine site are via:

- The main entrance, which is off the Lemington Road, Lemington.
- The Howick/West Pit entrance (travelling from Singleton):

From Singleton heading north towards Muswellbrook along New England Highway, follow signage to Muswellbrook, Tamworth, and Armidale etc.

As you depart Singleton, there is a Caltex Garage on your left at the top of the hill. Approximately 27km from this garage you will enter a 90km zone; just after the 90km zone there is a large concrete silo on your **LEFT**.

The road will then continue into double overtaking lanes for 3kms.

When this comes to end you will travel under an overpass, and take the first **RIGHT** into Pikes Gully road. Once on Pikes Gully Road you arrive at a sharp T intersection, turn **LEFT**.

Travel for a further 3kms until you come to a set of white gates, at these gates merge into the right hand turning lane. Turn **RIGHT**. Do not go through the gates.

Ensure you give way to all vehicles coming out of mine area.

Travel for another 4kms.

The entrance to the Howick facilities is to your right. Do not go through boom gate. Proceed to the first left into the undercover car park for the West Bathhouse / Muster. Take 2nd left for the Howick Training Centre.

NOTE: For all emergencies relating to the Newdell Load Point and/or HVO Load Point an escort will be provided to meet external agencies at the T intersection on Pikes Gully road.

The Southern Facilities entrance:

From Singleton heading south-west onto the Putty road, proceed for 9kms and turn right onto the Golden Highway. Continue on the Golden Highway for 12.5kms and turn right onto Comleroi road. Proceed along Comleroi road for 3kms and turn right onto public access road to Southern Facilities; you will drive through a set of disused traffic lights as the road then becomes Archerfield Access Track. Remain on the sealed road for 3kms, which directs you to the Sothern Facilities entrance.

NOTE: There are a number of gates located around the perimeter of the mine site, although these gates are padlocked, but once open access to the site and the majority of the bushland can be gained. Once inside the perimeter there are a number of internal roads that travel throughout the mine site.

On total fire ban days there will be no work undertaken in the Biodiversity Areas. No working alone on days with a Very High Fire danger rating.

| Plan | |
|--|-----------------------------------|
| Bushfire Management | |
| Owner: Senior Advisor Emergency Services | Document ID: HVO-12-PLAN-SITE-007 |

3.1.5 Site Security

The mine site has dedicated personnel for the sole purpose of conducting security functions, e.g.: patrolling the site perimeters. Access to the site is via boom gate/s by approved and authorised personnel only. Unless personnel have the correct authorisation vehicular access cannot be gained. The site Security Officers travel the site as part of their normal duties, report any security type issues to the Senior Advisor Emergency Management and during high fire danger periods travel to high points of the mine to observe any potential bushfire outbreaks.

3.1.6 Fuel Reduction Burning (Prescribed Burning)

No fuel hazard reduction burning is planned for the mine site. If any future fuel hazard reduction burning is to be considered it will be with and in direct consultation and approval of the Rural Fire Service.

Any fuel hazard reduction burns in the Biodiversity Areas will be planned in accordance with the *Bush Fire Environmental Assessment Code for New South Wales* (NSW Rural Fire Service, February 2006) and the guidelines contained in the Threatened Species Hazard Reduction Lists for the Bush Fire Environmental Assessment Code.

Current recommendations under the Code are:

- in woodland vegetation, fire should not occur within 5 years of a previous fire and consideration should be given to burning within 40 years of any previous fire; and
- in grassland vegetation derived from the woodland vegetation, the recommended fire intervals are the same as woodland vegetation.

All prescribed burns will be guided by the RFS Standards for low intensity bush fire hazard reduction burning (see 7 References).

3.1.7 Fire Breaks and Trails

Defined fire breaks and trails (completed and proposed) are included in the HVO Completed Fire Management Controls Map attached and dated 10.03.15; as Appendix B.

3.1.8 Bushfire Management Units

TABLE 1 – BUSHFIRE MANAGEMENT UNITS

| Fire Management Strategies | Bushfire Management Units | | |
|---|---------------------------|---------------------------|-----------------------------|
| | Management Unit Bushland | Management Unit Grassland | Management Unit Mining Area |
| Maintain fire breaks/trails | ✓ | ✓ | |
| Maintain fire trails & internal roads | ✓ | ✓ | |
| Maintain water fill points & remote fill points | ✓ | ✓ | ✓ |
| Manage vegetation around assets | ✓ | ✓ | |
| Restrict access onto the mine site | ✓ | ✓ | ✓ |

| <p style="text-align: center;">Plan</p> <p style="text-align: center;">Bushfire Management</p> | |
|---|-----------------------------------|
| Owner: Senior Advisor Emergency Services | Document ID: HVO-12-PLAN-SITE-007 |

3.2 Bushfire Risk Management

3.2.1 Fire Suppression

The procedure for fire suppression is detailed below:

- The Emergency services Officer (ESO) is to approach at a safe distance upwind and down slope (where possible) from the fire to conduct initial size up and assessment
- Ensure NSW Rural Fire Service is notified
- The ESO must assess the intensity of the fire, the type and amount of fuel, weather conditions and topography
- If safe to do so, attempt to extinguish fire where possible by implementing the appropriate Wildfire Suppression Techniques including Offensive Strategies such as Direct Attack, Indirect Attack or Parallel Attack
- The type of suppression activities employed will depend upon the resources available as listed in section 3.1.2 Equipment & section 3.2.4 Fire Fighting Resources and Equipment, Table 2
- If fire is beyond control, Defensive Suppression Strategies must be employed, move all personnel and equipment to safety, and await arrival of external emergency service crews
- The progress of the fire should be monitored from a safe distance by authorised personnel only and the NSW Rural Fire Service given Situation Reports (Sitreps) as required
- All other personnel should evacuate as required to the relevant designated emergency muster points
- Upon arrival of the NSW Rural Fire Service, Command and Control of the fire is to be handed over to the NSW RFS as per Incident Control System (see Page 13 of the HVO ERP).

3.2.2 Fire Detection and Emergency Response

If a bush or grass fire is identified the Hunter Valley Operations Emergency Notification Procedure as per the HVO ERP must be initiated:

1. Ensure the immediate safety of everyone.
2. Advise
 - By radio – Press RED button on radio, then press PTT Key (Push to Talk) to speak;
 - By telephone – Dispatch/Control Room

Say - EMERGENCY, EMERGENCY, EMERGENCY
3. Then state clearly:
 - Your name
 - Nature of the emergency
 - Location of emergency
 - What assistance is required
4. Dispatch/Control Room Operator will:
 - Notify the Shift Emergency Services Officer (ESO) on duty
 - Notify Mining Shift Coordinator
 - Await further instructions from the ESO and Mining Shift Coordinator
5. If required, evacuate the area and assemble at your emergency muster point.

| Plan Bushfire Management | |
|--|-----------------------------------|
| Owner: Senior Advisor Emergency Services | Document ID: HVO-12-PLAN-SITE-007 |

3.2.3 Communication

In the event of an emergency, the person initiating the Business Resilience Management Plan (BRMP), (often General Manager, Mine Manager or next most senior member of management) shall establish a central control base in the Main Administration Building.

Once the BRMP has been initiated and the Business Resilience Team (BRT) formed, duty cards will be distributed to members of the BRT. The duty cards outline roles and responsibilities of key personnel in the event of an emergency, whilst aligning with the Australasian Inter-Agency Incident Management Systems (AIIMS) methodology to aid in the transition of incident handover to external government agencies such as the NSW Rural Fire Service, should it be required.

All information requested by external parties, including the media and regulatory authorities is to be forwarded onto the Public Affairs Coordinator who will liaise with the BRT Leader and Media Spokesperson over information that can be released to the public and other stakeholders.

Specialists in External Relations, will coordinate contact between the media and the nominated spokesperson.

Exceptions to this are at operating sites, where the media are well known to local management. In these cases, the nominated spokesperson will use a comment agreed with External Relations.

The nominated spokespersons are:

- Managing Director, General Manager External Relations
- HVO – General Manager Operations, Alternate – as nominated by GM Operations

The Senior Media and Communications Specialist, in consultation with the nominated spokesperson, may make statements as the “company spokesperson” where required.

3.2.4 Fire Fighting Resources and Equipment

TABLE 2 – FIRE FIGHTING RESOURCES AND EQUIPMENT

| Water Source | Water Access | Approximate Capacity |
|---------------------------------------|---------------------------|--|
| Isuzu FTO 800 Fire Appliance | Rear / Pump Delivery | 2000lts water & 80lts firefighting foam |
| Isuzu FTS 750 Fire Appliance | Rear / Pump Delivery | 3300lts water & 80lts firefighting foam |
| Caterpillar Water Carts | Front/Rear storz coupling | 77,000 - 115,000lts water & 200lts firefighting foam |
| Caterpillar D11 Dozers | N/A | N/A |
| Caterpillar Graders | N/A | N/A |
| Hydrant Pillar System | As per Appendix C | As per Fire Services Block Plans |
| RFS Water Fill Points & Access Tracks | As per Appendix B | As per HVO Fire Management Controls |

4 REPORTING

The plan will be registered on the site Document Register as per the requirements of the company.

| | |
|--|-----------------------------------|
| Plan Bushfire Management | |
| Owner: Senior Advisor Emergency Services | Document ID: HVO-12-PLAN-SITE-007 |

5 **DOCUMENT REVIEW**

The HVO Bushfire Management Plan (BMP) will be reviewed every two (2) years or as required after a Wildfire (Bush/Grass fire) event.

| Plan Bushfire Management | |
|--|-----------------------------------|
| Owner: Senior Advisor Emergency Services | Document ID: HVO-12-PLAN-SITE-007 |

6 IMPLEMENTATION PLAN

TABLE 3 – BMP COMMITMENTS AND RESPONSIBILITIES

| Task | Purpose | Frequency | Responsibility |
|---|--|---|---------------------------------------|
| Ensure all personnel and contractors are given the appropriate level of awareness in bushfire management. | Educate to reduce accidental ignitions and improve response to fire including safe evacuation. | Induction, on commencement of employment, then every 2 years, Or after a significant fire event or changes in legislation where relevant. | Senior Advisor Emergency Management |
| Conduct investigations into bushfire outbreaks on the mine site. | Find cause of fire and aim to improved management/prevention. | After each event | Relevant Superintendent & HST Manager |
| Personnel to report any incidence of bushfire to Dispatch/Control (Ext: 2222, Radio: Red Button) | Rapid fire control response and improve emergency response. | As required | All Personnel |
| Familiar with location of flora, fauna, Aboriginal heritage and European heritage in area prior to undertaking any fire preventative measures. | Reduce likelihood of unintentional harm to significant features. | As per approval of Ground Disturbance Permit (GDP) System & Site Cultural Heritage requirements | Environmental Advisor |
| Inspect and maintain fire trails and breaks. | Improve access for fire control/response and management tasks | Inspection: June of each year & monthly during Sept to March (Fire Season). Maintenance: On a quarterly basis e.g.: slashed or graded every 3 months | Land & Tenements Coordinator |
| Install and maintain signage for main intersections/gates of important trails on site. Install and maintain signage for main gates of Biodiversity Areas. | Aid emergency navigation. | Installation within one month of management plan approval date & inspected monthly during Sept to March (Fire Season) | Land & Tenements Coordinator |
| Maintain Fire Danger Rating information board at mine entry. | Raise awareness of fire risk amongst personnel. Greater vigilance on Extreme/Catastrophic fire days to prevent ignitions and becoming isolated in high risk areas of site. | Daily | Senior Advisor Emergency Management |

| <p style="text-align: center;">Plan</p> <p style="text-align: center;">Bushfire Management</p> | |
|---|-----------------------------------|
| Owner: Senior Advisor Emergency Services | Document ID: HVO-12-PLAN-SITE-007 |

| Task | Purpose | Frequency | Responsibility |
|---|---|---|--|
| Review fuel loads and complete necessary fuel reduction on site. | Assess need for hazard reduction activities | Maintenance: On a quarterly basis e.g.: slashed or graded every 3 months | Technical Services Coordinator |
| Review fuel loads and complete necessary fuel reduction on buffer properties. | Assess need for hazard reduction activities | Maintenance: On a quarterly basis e.g.: slashed or grazed every 3 months | Land & Tenements Coordinator |
| Review fuel loads and complete necessary fuel reduction Biodiversity Areas. | Assess need for hazard reduction activities | Regular property inspections. Maintenance: fire breaks/main access tracks. Data collected from Ecological Monitoring can be used to assess the need for fuel reduction burns. | Environmental Advisor |
| Maintain access to water storage dams and site access. | Improve fire control/response. | N/A – Only minimal/select dams have maintained access to allow Light Vehicle 4WD access or an RFS Cat 7 4WD Appliance based upon an individual Risk Assessed approach for each dam | Technical Services Coordinator |
| Maintain access and function of water hydrants and pumps. | Aid fire response/control. | Contractual service provider conducts 3 monthly, 6 monthly & annual testing & maintenance as per AS1851 - 2012 | Technical Services Coordinator |
| Maintain important communications equipment. | Allows rapid response by site Emergency Response, RFS and personnel in event of fire. | Daily for normal operations & Emergency Tone tested weekly | Technical Services Coordinator |
| Maintain important equipment and information in case of bushfire (site maps, gate keys and access, trail routes, etc.). | Allows rapid response by site Emergency Response, RFS and personnel in event of fire. | ESO weekly & monthly equip maintenance, daily site security functions ,BRRP annual & BMP biannual reviews | Senior Advisor Emergency Management / Land & Tenements Coordinator |
| Reporting bushfire incidences / management activities in AEMR. | Increases awareness of site fire management. | Annually | Environment & Community Manager |

| Plan Bushfire Management | |
|--|-----------------------------------|
| Owner: Senior Advisor Emergency Services | Document ID: HVO-12-PLAN-SITE-007 |

| Task | Purpose | Frequency | Responsibility |
|---------------------------------------|-------------------------------------|--|---|
| Review Bushfire Management Plan (BMP) | Ensure information remains relevant | Bi-annually, as required (see section 5.0) | Senior Advisor Emergency Management & HST Manager |

7 REFERENCES



Section 63 of the Rural Fires Act 1997



HVO-12-PLAN-Site-004 HVO BRMP Emergency Response Plan - Section 2



[Rural Fire Service NSW Standard for Low Intensity Bush Fire Reduction Burning](#)

| | |
|--|-----------------------------------|
| <p style="text-align: center;">Plan Bushfire Management</p> | |
| Owner: Senior Advisor Emergency Services | Document ID: HVO-12-PLAN-SITE-007 |

8 CONTACTS LISTING

TABLE 4 – STAFF TELEPHONE CONTACT DETAILS

| NAME | PHONE / MOBILE | FAX |
|-------------------------------------|----------------|-----|
| HVO RECEPTION | 02 6570 0300 | N/A |
| SHIFT EMERGENCY SERVICES OFFICER | | N/A |
| SENIOR EMERGENCY SERVICES OFFICER | | N/A |
| SENIOR ADVSIOR EMERGENCY MANAGEMENT | | N/A |
| MANAGER HEALTH & SAFETY | | N/A |

| | |
|--|-----------------------------------|
| <p style="text-align: center;">Plan Bushfire Management</p> | |
| Owner: Senior Advisor Emergency Services | Document ID: HVO-12-PLAN-SITE-007 |

TABLE 5 – EXTERNAL EMERGENCY SERVICES & UTILITIES/INSTRUMENTALITIES CONTACT DETAILS

| ORGANISATION | LOCATION | PHONE |
|--|--------------------|----------------------------------|
| State Emergency Services | Singleton | (02) 6572 4669 |
| Ambulance | All areas | 131 2333 |
| Mines Rescue Emergency 24 hr. number | Singleton | (02) 6573 9000 (02) 6573 2999 |
| Police | Muswellbrook | (02) 6542 1399 |
| Police | Singleton | (02) 6578 7499 |
| Fire & Rescue NSW | Muswellbrook | (02) 6541 2846 |
| Fire & Rescue NSW | Singleton | (02) 6572 1495 |
| NSW Rural Fire Service Duty Phone (24 hr. number) | Bulga | (02) 6574 5397 |
| NSW Rural Fire Service | Bulga | (02) 6575 1200 |
| Hospital | Muswellbrook | (02) 6542 2000 |
| Hospital | Singleton | (02) 6571 9222 |
| UTILITY | CONTACT | PHONE |
| Telecommunications | Telstra | 131 191 |
| Power | Energy Australia | 131 388 |
| Gas (bottled) | BOC Gas | 1800 653 572 |
| Water | Hunter Water Corp. | 1300 657 000 |
| Sewerage Authority | Hunter Water Corp. | 1300 657 000 |
| Fuel Supplier | Caltex | 1800 033 111 |

| Plan | |
|--|-----------------------------------|
| Bushfire Management | |
| Owner: Senior Advisor Emergency Services | Document ID: HVO-12-PLAN-SITE-007 |

TABLE 6 – NEIGHBOURS AND TENANT CONTACT DETAILS

Licensee Contact Details

| Name | Category | Address | Home Phone | Mobile Phone |
|------|----------|--|------------|--------------|
| | | "Archerfield Dairy", 308 Archerfield Access | | |
| | | "Dam Paddock", Archerfield Road | | |
| | | "Lemington Paddocks", Archerfield Road | | |
| | | "Cheshunt Park", 294 Barrys Access | | |
| | | "Cheshunt Park", 400 Barrys Access | | |
| | | "Cheshunt Flats", 400B Barrys Access | | |
| | | "Cheshunt Farm", Barrys Access | | |
| | | "Burnumwood Flats", Barrys Access | | |
| | | "Appleyard", 2 Comleroi Road | | |
| | | 1188 Golden Hwy | | |
| | | 16 Comleroi Road | | |
| | | Barrellan BB2, Jerry's Plains Road | | |
| | | "Wandewoi", Lemington Rd | | |
| | | "Riverview" Lemington, Lemington Road | | |
| | | "Hunter Valley North", Lemington Road | | |
| | | Old New England Highway | | |
| | | "Ollenberry", 1561 Lemington Road | | |
| | | Eyrie Bower & Curlewis", 186 & 152 Knodlers Lane | | |
| | | "Greenleek", 17 WA Long Point Road | | |
| | | "Simiana", 66 Long Point Rd | | |
| | | "Stafford" & "Hornes", 85 & 237 WA Long Point Road | | |
| | | "Carrington Stud", Golden Highway | | |
| | | "Carrington West", Lemington Rd | | |

| Plan Bushfire Management | |
|--|-----------------------------------|
| Owner: Senior Advisor Emergency Services | Document ID: HVO-12-PLAN-SITE-007 |

Residential Tenant Contact Details

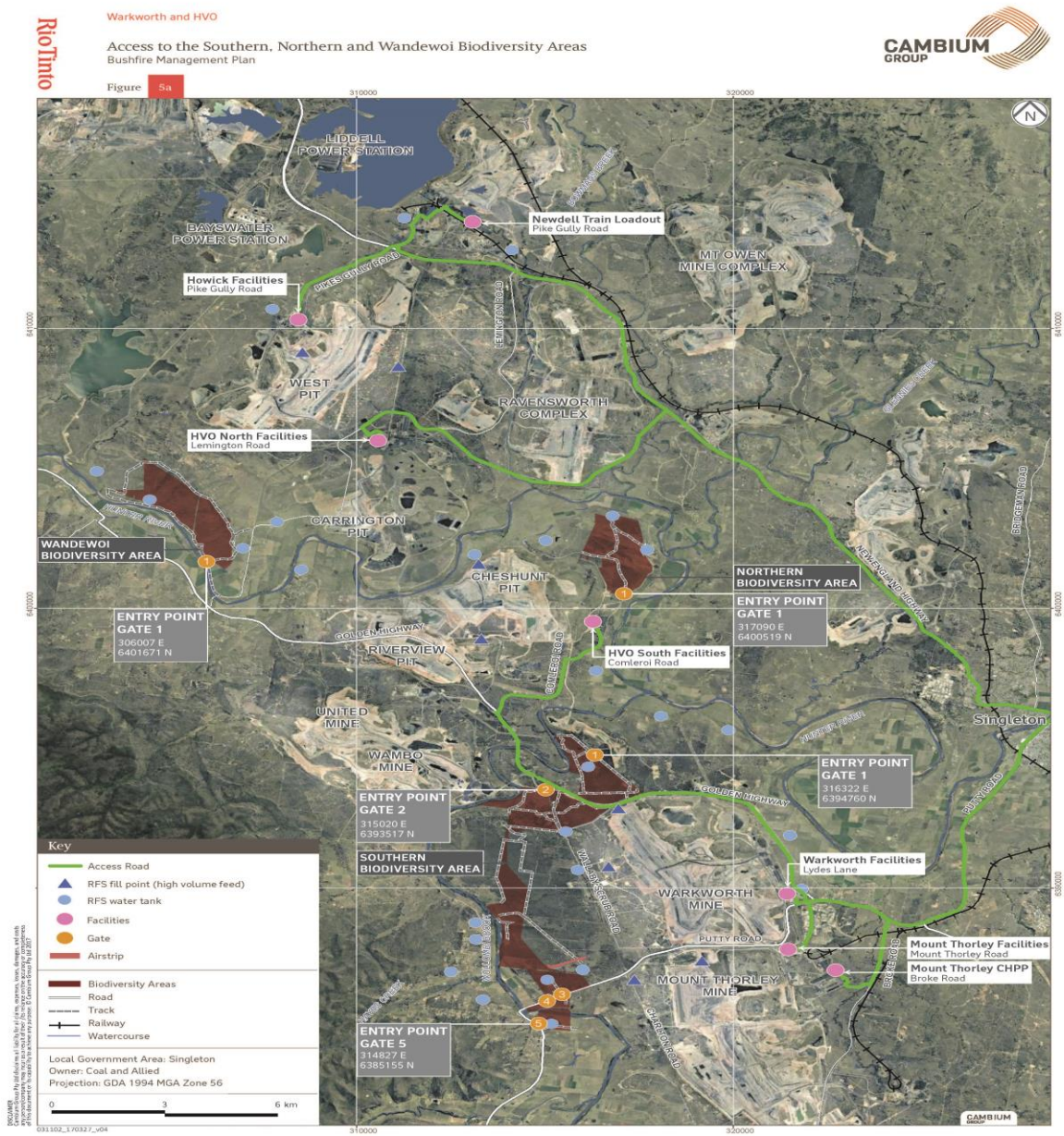
| Name | Category | Address | Managing Agent, Phone 0427 722705 Specialist Land Management, 0457 813590 |
|---------------|----------|---|--|
| Vacant | | 3 Taniki Court | |
| | | 46 Dangar Road | |
| | | 14 Wilmot Place | |
| | | 5 Berry Place | |
| | | "Shearers Cottage", 148 Archerfield Access | |
| | | "Archerfield" Homestead, 308A Archerfield Road | |
| | | "Archerfield" House 1 , 308B Archerfield Access | |
| | | "Archerfield" House 2 , 308B Archerfield Access | |
| | | "Archerfield" House 3, 308B Archerfield Access | |
| | | "Cheshunt Park" No. 1, 294A Barrys Access | |
| | | "Cheshunt Park" No. 2, 294B Barrys Access | |
| | | "Comleroi House", 16A Comleroi Road | |
| | | 16B Comleroi Road | |
| | | 1072 Jerrys Plains Rd | |
| | | "Hicks Cottage", 1138 Jerry's Plains Road | |
| | | Warkworth School House, 12 Simpson Street | |
| | | "Ollenberry", 1561 Lemington Road | |
| | | "Wandewoi" Cottage 2 , 1622 Lemington Rd | |
| | | "Wandewoi" Homestead, 1686 Lemington Rd | |
| | | "Wandewoi" Cottage 1, 1686 Lemington Rd | |
| | | 266 Dights Crossing | |
| | | 880 Maison Dieu Road | |

| Plan Bushfire Management | |
|--|-----------------------------------|
| Owner: Senior Advisor Emergency Services | Document ID: HVO-12-PLAN-SITE-007 |

| Name | Category | Address | Managing Agent, Phone 0427 722705 Specialist Land Management, 0457 813590 |
|------|----------|--|--|
| | | 873 Maison Dieu Road | |
| | | Cottage 1, 186 Knoddlers Lane | |
| | | Cottage 2, 186 Knoddlers Lane | |
| | | Cottage 3, 186 Knoddlers Lane | |
| | | Cottage 1, 152 Knoddlers Lane | |
| | | Cottage 2, 152 Knoddlers Lane | |
| | | "Simiana", 66 Long Point Rd | |
| | | "Kannar", 85 Long Point Rd | |
| | | Kannar 'B', 121 Long Point Rd | |
| | | 131 Long Point Rd | |
| | | 133 Long Point Rd | |
| | | "Stafford" Cottage, 237C Long Point Road | |

9 APPENDICES

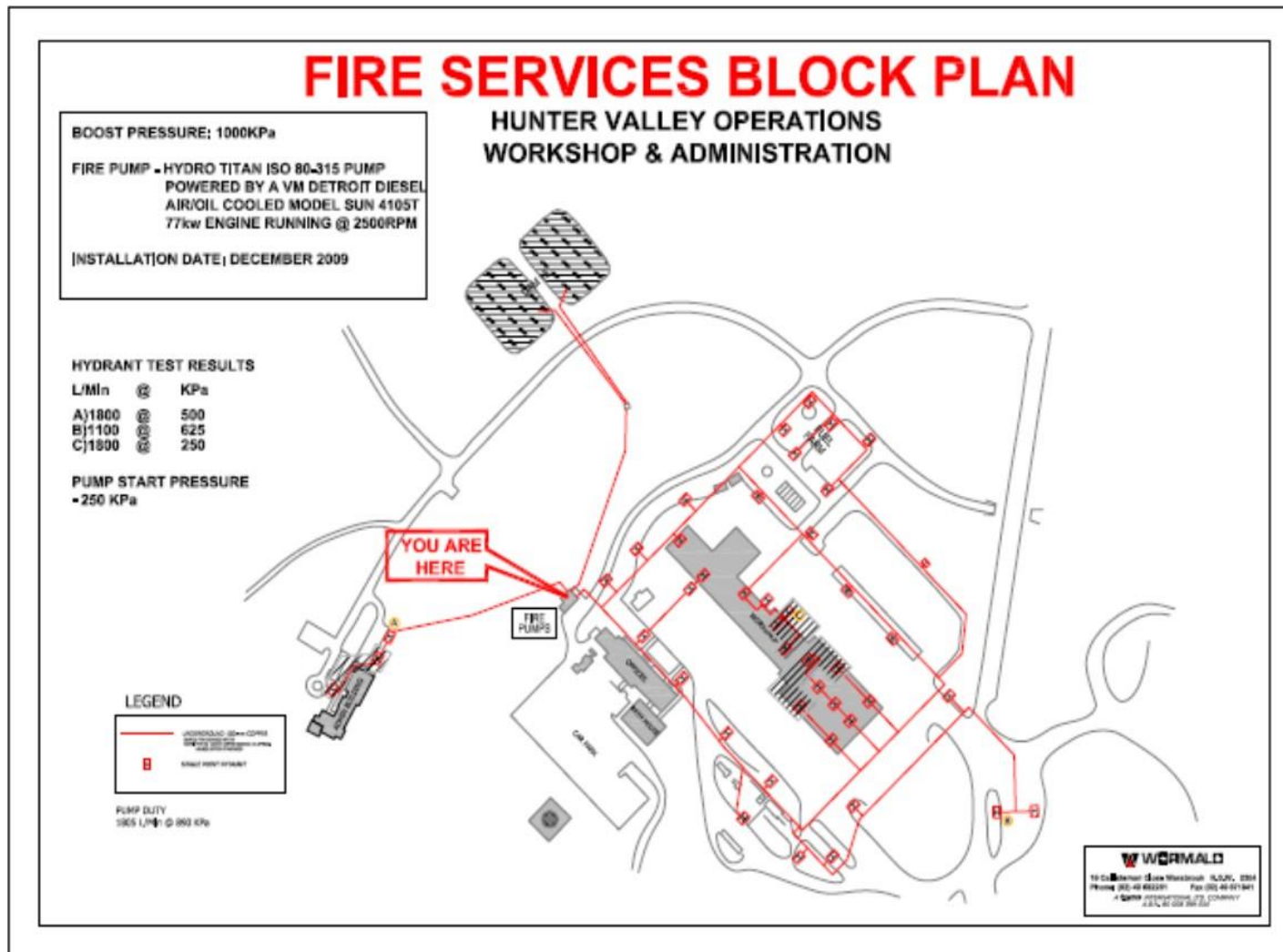
APPENDIX A – HVO MTW ACCESS



Plan
Bushfire Management

Owner: Senior Advisor Emergency Services

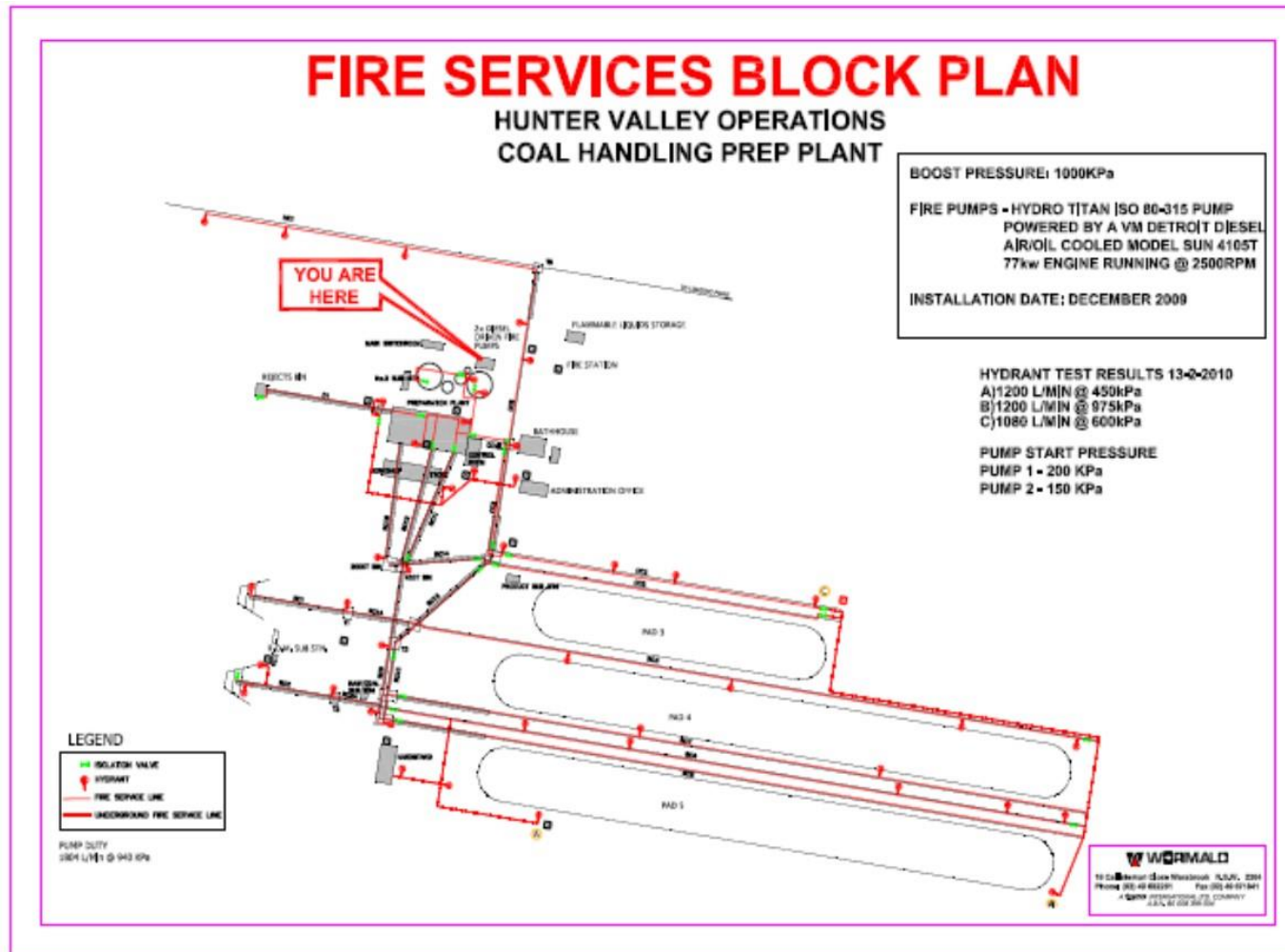
Document ID: HVO-12-PLAN-SITE-007



Plan
Bushfire Management

Owner: Senior Advisor Emergency Services

Document ID: HVO-12-PLAN-SITE-007



| | |
|--|-----------------------------------|
| <p style="text-align: center;">Plan Bushfire Management</p> | |
| Owner: Senior Advisor Emergency Services | Document ID: HVO-12-PLAN-SITE-007 |

REVISION HISTORY

| Rev | Date | Revision Description | Who Consulted |
|------|------------|--|--|
| 1.0 | 23.06.2015 | Document created and approved | Mark Hackenberg, Kevin Hall, Simon Coleman |
| D1.1 | 01.06.2017 | Updated biodiversity areas and mapping | Nel Byatt |
| 2.0 | 20.10.2017 | Reviewed, updated. | Jessica Blair, Kevin Hall |